



SOLENT
LOCAL
ENTERPRISE
PARTNERSHIP

ANNUAL REPORT



#solent2050

CONTENTS

Section	Page Number
1. Foreword and Introduction by Chief Executive Anne-Marie Mountifield and Chair Rachael Randall	3
2. Executive Summary	5
3. Solent Local Growth Funding Progress	7
4. The Solent Summit	9
5. Solent 2050	10
6. Solent 2050 - Our Seven Priorities	11
15. Solent LEP Board	20
16. Governance	21
17. Financial Forecasts	25
18. Project Dashboard	26

1. FOREWORD AND INTRODUCTION

Creating a bright future

Anne-Marie Mountifield,
Chief Executive, and
Rachael Randall, Chair



The Solent LEP is in a unique position to champion our region, bringing together partners, businesses and leaders who share the ambition of prosperity and opportunity for all those in our communities. We have a proven track record of helping our businesses through the economic challenges of recent years and are well placed to move our region forward to reach its full potential.

In the Summer of 2022, we launched our long-term economic plan, Solent 2050. This is an ambitious strategy focusing on priority areas which is designed to deliver economic prosperity for our communities, through using our convening ability which brings organisations together, allows collaboration and leverages investment.

Solent 2050 was launched at a showcase event, the Solent Summit, where we welcomed hundreds of colleagues across business, education and local government with a common goal of bringing opportunity to our region. Looking back on the past twelve months, it is encouraging to see how much progress has been made in achieving the Solent 2050 vision.

December 2022 saw the formal designation of the Solent Freeport.

The Solent LEP is proud to have played a leading role in establishing the Solent Freeport which is a once-in-a-generation opportunity to deliver prosperity, growth and jobs for the region. Working in partnership with other coalition partners in the Freeport, it is a testament to the area and all partners that Solent Freeport was one of the first freeports to secure final approval from HM Government. We are extremely pleased to have successfully completed the setup phase and secured the much sought after freeport designation for the region. As the nation's global gateway, Solent Freeport is critical in ensuring the UK can remain competitive on an international stage.

Our coastal renaissance is also being driven by revitalising communities through the direct input of Maritime UK Solent. We have established this sector-based cluster and industry-led body to promote the Solent's successful maritime cluster on an international stage and help businesses reach their fully potential.

We held the first Maritime UK Solent Awards in October 2022 to highlight the success of this cluster. These were extremely well supported across the industry and the region, demonstrated by national judges giving their time and expertise, the quality of the entries and attendance at the event.

We are ambitious to be at the forefront of innovation to create a low carbon future, laying the foundations for generations to come, and in November we became one of the three founding partners of the Solent Cluster alongside the University of Southampton and ExxonMobil. With over 80 organisations committed to becoming members of The Solent Cluster, this influential collaboration will ensure the Solent becomes a leading centre for low carbon investment that will grow the regional economy, protect skilled jobs, and create new employment opportunities in the energy technologies and industries of tomorrow.

Continued 

1. FOREWORD AND INTRODUCTION

Investment with our local authority partners saw some major schemes come to fruition over the past year, helping make our towns and cities fantastic places to live. The new 3.5km Stubbington Bypass opened in May 2022, following £34 million investment from the Solent LEP with the Department of Transport from the Local Growth Deal - the LEP's largest-ever investment. The improved journey times it is delivering will boost the local economy by encouraging regeneration, particularly at the Solent Enterprise Zone, at the same time as improving the lives of local people by diverting traffic from Stubbington centre.

It was great to see the results of our £5million investment with the completion of Phase 1 of the Southsea Coastal Flood Defence Scheme in February 2023. Once all phases are complete, the scheme will help reduce the risk of coastal flooding for more than 10,000 homes and 2,300 businesses, as well as creating significant employment and housing.

We are committed to help create great communities and unlock strategic housing sites to allow new homes to be built. We invested £7.6m through the Infrastructure to Support House Building Fund to deliver aspects of the fourth phase of the Centenary Quay housing development in Woolston, including housing units, commercial floorspace, public realm improvements

and new jobs. Centenary Quay is Southampton's tallest building and a landmark building, key to the regeneration of the area, and has so far delivered 346 new housing units.

Our strength has always been our flexibility and agility, our ability to find new solutions and to direct support where it will have most impact. Over the past year, we have seen significant headway in delivering innovative approaches to skills, jobs and decarbonising our industries which will drive economic success.

This includes the launch in November 2022 of the South Coast Institute of Technology (IoT) - the result of a successful application led by Solent University and supported by the Solent LEP which is central to ensuring there is a home-grown workforce with the right skills to meet industry needs. It will see five further education colleges and two universities working collaboratively with key employers to provide clear career pathways into the industries where we know there are gaps.

We've developed a programme of mentoring, networking and skills support for those working in the creative and cultural industries, a sector growing fast, with an additional 10,000 jobs created across the country over the last five years alone. The creative industries are at the heart of our ambitions to create an environment where the visitor and

cultural economy can thrive and we are bringing together the creative business community across the wider region in recognition of the importance of this sector to both the regional and national economy.

This commitment also includes our £3.6 million investment from the Local Growth Fund in the University of Portsmouth's new Centre for Creative and Immersive Extended Reality (CCIXR) which opened in May 2022. We are very proud to see this in our region - the UK's first purpose-built facility which brings together the very latest XR technologies under one roof supporting others to innovate with XR and equipping graduates with highly sought-after skills in a rapidly evolving field.

Further investment in the University of Portsmouth via the Getting Building Fund saw the new Centre for Enzyme Innovation (CEI) officially open its new Industrial Engagement Hub - a pioneering research centre, which is creating solutions to the global plastic pollution problem.

Much has been achieved this year, but we are ambitious to go further. We look forward to continuing collaborative working with partners across all sectors to champion our region and ensure our young people have opportunities: building on our role as the catalyst for creating a brighter future for our communities based on green growth, skills, and job creation.

2. 2022 EXECUTIVE SUMMARY

Skills

- 60 Enterprise Advisers are working closely with senior leadership teams in schools and colleges, helping to help to bridge the gap between the world of work and education by advising on employer expectations and creating opportunities for young people
- School and College engagement with the Solent Careers Hub is up by 33% on 2020/21
- Gatsby Benchmark (which measure good careers guidance in schools and colleges) performance has improved by 22% against the previous year



Business Support

- The Solent LEP Growth Hub engaged with 15,280 businesses throughout 2022
- 240 people signed up to bespoke Growth Hub programmes which include a combination of for 1:1 support, in person events and mentoring
- The newly launched Solent Creative Growth programme has engaged directly with 109 people at networking and skills events in its first four months



Strategic Sectors

- The inaugural Maritime UK Solent Awards attracted 100 entries, were judged by a national panel of maritime experts and welcomed 250 guests to the awards event
- A Collaboration Agreement with Turku Business Region followed a successful trade delegation to the Solent - developing a mutual beneficial business relationship to promote opportunities and connect maritime businesses and innovation assets
- The Solent LEP contributed £3.6m from the Local Growth Fund to the University of Portsmouth's new £7 million Centre for Creative and Immersive Extended Reality (CCIXR) which officially opened in May 2022 - the UK's first purpose-built facility bringing together the very latest XR technologies under one roof to support innovation in virtual, augmented and extended realities

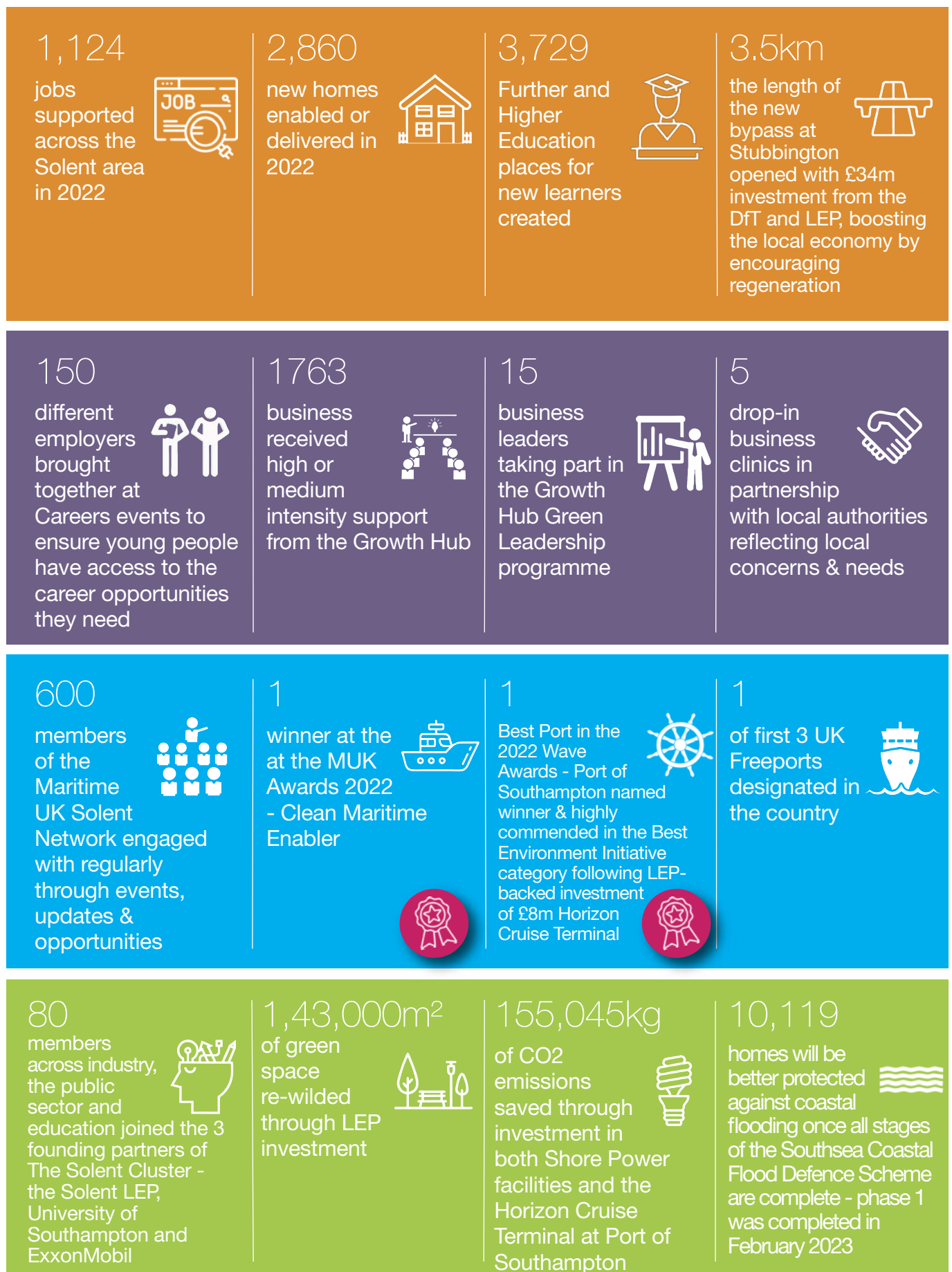


Net Zero

- The LEP is proud to be one of three founding partners of The Solent Cluster, launched in the Autumn 2022 and now with over 80 member organisations across the private, public and academic sectors
- The Solent LEP's £2.225m investment into the Isle of Wight Council's phased development of a mixed-use scheme at Branstone Farm will result in rural employment units, alongside housing and a biodiversity park on completion in Spring 2023
- With £1m funding from the Solent LEP via the Getting Building Fund, the University of Portsmouth's Centre for Enzyme Innovation (CEI) officially opened its new Industrial Engagement Hub in May

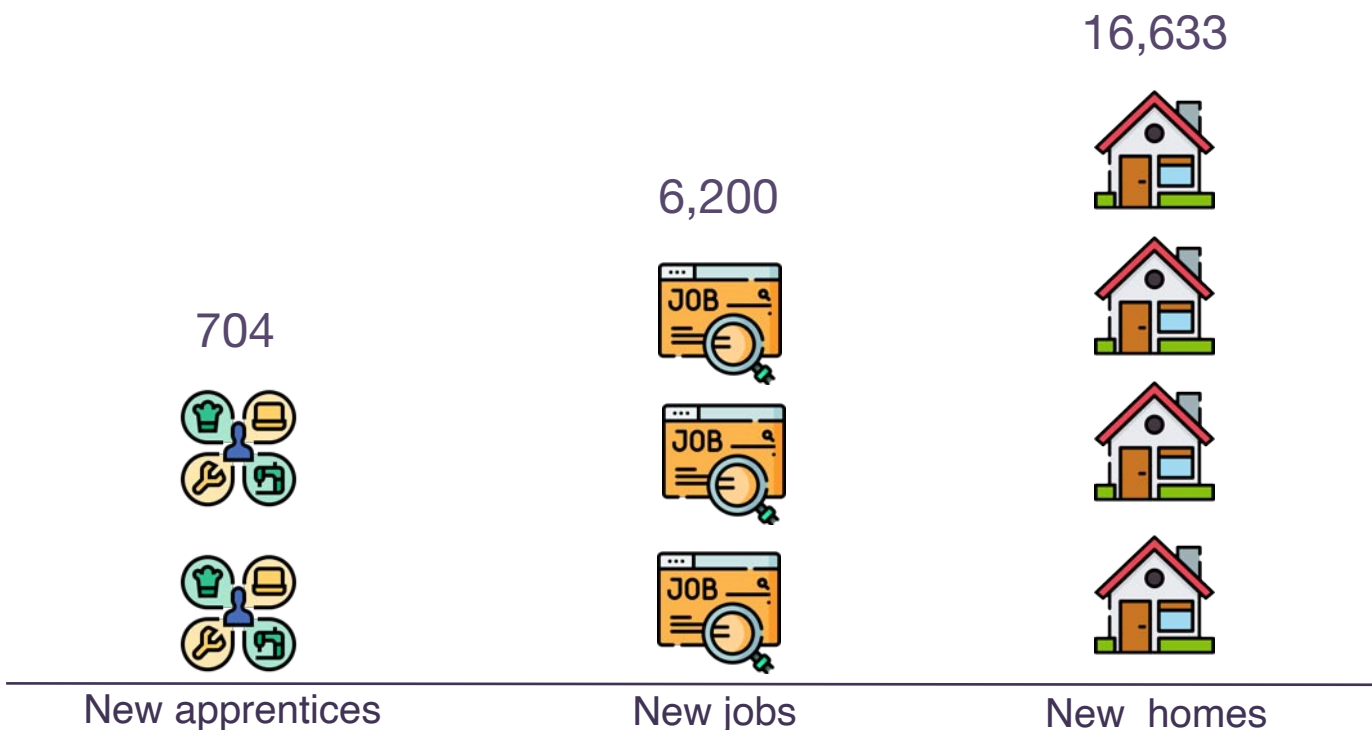


2. 2022 EXECUTIVE SUMMARY



3. SOLENT LOCAL GROWTH FUNDING PROGRESS

Since 2015 Solent LEP's investments through the Solent Growth Deal and Getting Building Fund have seen the creation of:



14.9km
new road to
improve journey
times

2,015
new
construction
jobs

30,138m²
creation of
commercial floor
space

Reduced
flood risk to
2,024
homes

1,430,000m²
green space / public
realm creation or
improvements

New or
improved fibre
optic
connections to
932
homes



View of Old Portsmouth showing Southsea Coastal Defence scheme (photo: Portsmouth City Council)

4. THE SOLENT SUMMIT

The Solent LEP's long-term economic strategy Solent 2050 was launched at the Solent Summit in June 2022.

The Summit welcomed over 300 guests to the Horizon Cruise Terminal at Associated British Ports in Southampton and a further 200 people joined the hybrid event online. The Horizon Cruise terminal opened in 2020, supported by a grant of £8m from the Solent LEP through the Government's Getting Building Fund. With an inspirational keynote speech from British sailor, Dee Caffari MBE, the Solent Summit saw the launch of:

- Solent 2050 - reinforced by a series of afternoon seminars from partner organisations, highlighting the importance of the region's unique natural capital and the role of universities in amplifying innovation and developing the skills and talent of those living in the region to translate into career opportunities
- the commercial launch of the Solent Freeport - which, by the end of the year, had become one of the first new UK freeports officially designated by Government



Dee Caffari MBE speaking at the Solent Summit

5. SOLENT 2050

Solent 2050 is the long term economic strategy for the region, designed to level up the Solent, create jobs and drive innovation.

Our vision for the Solent in 2050 is: to be the globally leading maritime cluster and at the forefront of innovations to adapt to climate change, with towns and cities that are fantastic places to live, trade and with opportunities for all our communities to flourish.

To achieve this vision, the LEP has established seven priorities to level up the Solent economically, creating jobs and driving innovation. Solent 2050 aims to achieve sustainable and transformative growth across the region with a vision of building a more prosperous and productive regional economy where our communities can thrive. It is

ambitious to protect our natural assets and communities from the effects of climate change and secure the renaissance of our coastal towns.

Read the Executive Summary of the Solent 2050 Strategy [here](#)

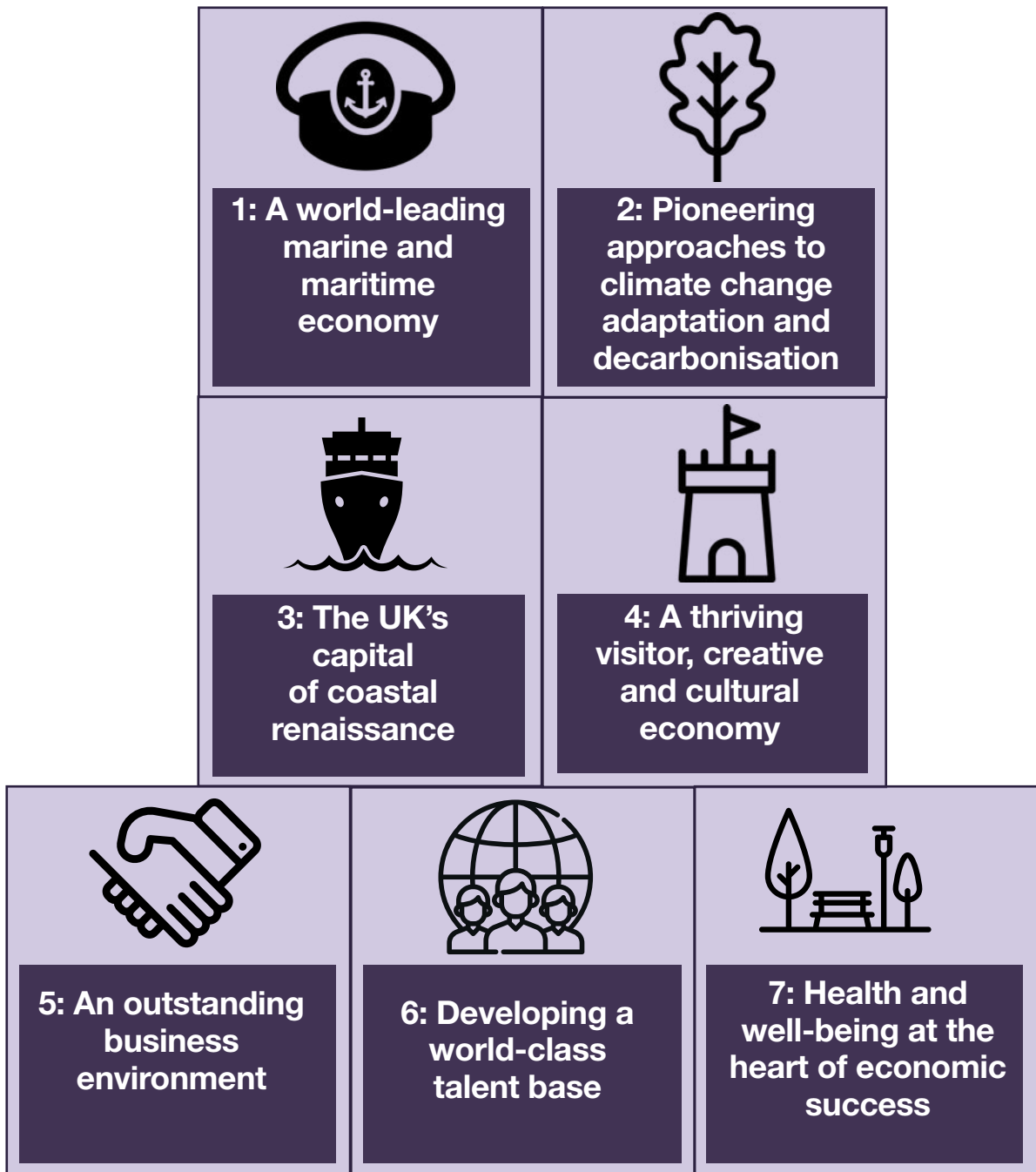


Watch the video

Watch the Solent 2050 film, that sets out some of the aspirations behind the Strategy, [here](#)



6. SOLENT 2050 PRIORITIES



Icons by Freepik, Monkik, Kerismaker and Smashicons from www.flaticon.com

7. SOLENT FREEPORT DESIGNATION

In December 2022, the Solent Freeport was announced as one of the first of three UK Freeports to be fully approved by Government.

The Solent Freeport is a widely supported proposal which will transform Solent productivity, create more than 15,000 jobs in the Solent and a further 15,000 throughout the UK. It is expected that the Solent Freeport will attract £1.35 billion private sector investment in the area, and because of the Solent's existing trading links, an additional £1.75 billion GVA is forecast to be generated for the UK as a whole.

As the nation's global gateway, benefitting from a natural geographic advantage that sets it apart from any other UK region while benefiting from exceptional connectivity by rail, road and air, the Solent is in the strongest possible position to expand the UK's trade with new markets as the UK

establishes new trading relationships with the world.

The Solent Local Enterprise Partnership played a key role in the development of the Solent Freeport, convening partners and working with Government to submit the original Freeport bid. During 2022, the LEP continued to work with partners to develop the full business case; and in December the Levelling Up Minister, Dehenna Davison MP, came to the Solent to announce the first freeports designated by Government.



Watch the video

Watch the Solent Freeport film here



Left to right: Dehenna Davison MP, Brian Johnson - Chair of Solent Freeport, Alastair Welch - Regional Director, ABP, Cllr Satvir Kaur - Leader, Southampton City Council

8. A WORLD-LEADING MARINE AND MARITIME ECONOMY



Stuart Baker, Maritime UK Solent Managing Director (first on the right) at a network meeting with a trade delegation from Turku, Finland

- Maritime UK Solent, the regional sector based cluster and employer representative body backed by the Solent LEP, hosted a trade delegation and signed a Collaboration Agreement with Turku Business Region. This will develop a mutual beneficial business relationship to collaborate, promote opportunities and connect maritime businesses and innovation assets
- The inaugural Maritime UK Solent Awards were held, designed to celebrate the success while raising the profile of this outstanding regional cluster. Around 100 entries for 12 categories were submitted; a national panel of maritime experts was assembled, and the awards evening attracted 250 guests
- Maritime UK Solent commissioned an important study by the Centre of Economics and Business Research (CEBR) which demonstrated the increasing significance and growth of the maritime sector in the Solent and its contribution to the local and national economies
- Maritime UK Solent collaborated with the Royal Navy's Solent Maritime Enterprise Zone and Connected Places Catapult to establish a Solent Maritime Innovation Gateway (MIG) to coordinate the breadth of maritime innovators, researchers and organisations in the Solent and provide an easily accessible route for buyers, investors and other stakeholders to access this vibrant community.
- New shore power facilities at the Port of Southampton, supported by £4.4m investment from the LEP, launched in April 2022. To date, 55 vessels have used the facility to date consuming 902,875 kWh electricity and saving 8,631kg of CO2 emissions.

9. PIONEERING APPROACHES TO CLIMATE CHANGE ADAPTATION AND DECARBONISATION




Left to right: Matt Crocker, Senior Vice President of ExxonMobil Low Carbon Solutions; Dr Lindsay-Marie Armstrong, Associate Professor within the School of Engineering at the University of Southampton and Solent Academic Cluster lead for the Industrial Decarbonisation Research and Innovation Centre; Anne-Marie Mountfield, Solent LEP Chief Executive; and Will Lockhead, Deputy Director, Industrial Carbon Capture and Hydrogen Business Models

- The Solent LEP was one of three founding partners of The Solent Cluster alongside the University of Southampton and ExxonMobil, launched in November 2022. Now with over 80 members across the region and all sectors, the Solent Cluster is a collaboration designed to ensure the Solent becomes a leading centre for low carbon investment that will grow the regional economy, protect skilled jobs, and create new employment opportunities in the energy technologies and industries of tomorrow
- The LEP's Growth Hub team launched the Green Leadership Programme in 2022 to support businesses based in the Solent to embed sustainability into their every day and strategic operations. The programme offers both 1:1 and workshop sessions, and has supported 15 businesses to date
- The University of Portsmouth's Centre for Enzyme Innovation (CEI) officially opened its new Industrial Engagement Hub in May. With £1m funding from the Solent LEP via the Getting Building Fund, the CEI is a pioneering research centre, which is creating solutions to the global plastic pollution problem
- Investment of £5m in Phase 1 of the Southsea Coastal Flood Defence Scheme, completed in February 2023. Once all phases are complete, the scheme will help reduce the risk of coastal flooding for more than 10,000 homes and 2,300 businesses, as well as creating significant employment and housing
- Following the LEP's investment of £2.225 million into the Isle of Wight Council's development of a mixed-use scheme at Branstone Farm, the housing element is complete and residents are moving in. The completed scheme is made up of rural delivery units alongside housing and a biodiversity park
- With support from the LEP, the Hampshire and Isle of Wight Wildlife Trust purchased the Nunwell Estate and are working to re-wild 143 hectares and provide 2,879kgs nitrogen savings per year from the Solent area. 1,422 units of nitrates credits are already contracted with developers to enable houses to be built in the Solent area

10. THE UK'S CAPITAL OF COASTAL RENAISSANCE

- The new 3.5km Stubbington Bypass opened in May 2022. The Solent LEP with the Department of Transport invested £34 million from the Local Growth Deal into this new bypass at Stubbington, making it the LEP's largest-ever investment. The improved journey times it is delivering will boost the local economy by encouraging regeneration, particularly at the Solent Enterprise Zone, at the same time as improving the lives of local people by diverting traffic from Stubbington centre and providing better facilities for people to walk and cycle. The Stubbington Bypass forms part of a package of transport infrastructure projects to improve access for those living and working in Fareham and Gosport, to which the Solent LEP has already contributed over £20 million. Together the transport schemes have enabled

- 1,200 new jobs and over 3,000 new homes so far
- A326 and Fawley Waterside connectivity - work is underway on both transport and broadband infrastructure improvements: the schemes will improve journey time on the A326, and provide 19,720 high speed broadband connections, expected to assist 200 businesses
- Improvements at North Whiteley are underway with 438 new homes delivered this year as part of an investment of over £9m from the Local Growth Fund to deliver strategic highways improvements to support a major housing and community development at North Whiteley
- The Solent LEP has invested £7.6m through the Infrastructure to Support House Building Fund to deliver aspects of the fourth phase of the Centenary Quay housing development in Woolston, including housing units, commercial floorspace, public realm improvements and new jobs. Centenary Quay is Southampton's tallest building and a landmark building, key to the regeneration of the area. The project has delivered 346 new housing units and was completed in 2022.



Watch the video

Watch a film showing the opening of the Stubbington Bypass [here](#)



New homes at North Whiteley

11. A THRIVING VISITOR, CREATIVE AND CULTURAL ECONOMY

- The University of Portsmouth's new £7 million Centre for Creative and Immersive Extended Reality (CCIXR) officially opened in May 2022 - the UK's first purpose-built facility bringing together the very latest XR technologies under one roof to support innovation in virtual, augmented and extended realities. The Solent LEP contributed £3.6m from the Local Growth Fund towards CCIXR which offers world-class XR training, research and development, addressing a critical skills shortage in this fast-moving industry and supporting the creation of high-value jobs regionally, nationally and beyond
- The LEP launched a range of free support programmes and events to help creative businesses in the Solent to prosper and grow. The Solent Growth Creative

Programme includes themed networking events and one-to-one mentoring sessions, and to date has engaged with over 138 freelancers and companies working in the creative sector.

- In support of Southampton's bid to become UK City of Culture 2025, the LEP hosted a hybrid conference for all creative businesses working across the Solent - Championing the Solent's Creative Industries in March. The event highlighted the potential for growth in the creative industries in the region and included panel discussions and workshops which explored access to careers in the creative industries, skills retention and fostering a successful business environment for the sector



Ventnor Exchange Pod



Goddards Brewery and Visitor Centre, Branstone

12. DELIVERING A WORLD-CLASS TALENT BASE



Student at the Centre for Enzyme Innovation, the University of Portsmouth

- The Solent LEP is continuing to support the changes to the post 16 skills and education landscape as set out by Government in the Skills for Jobs White Paper. This will see the introduction of Local Skills Improvement Plans (LSIP), expected in 2023, which will set out the key changes needed in local areas to make post-16 technical education and training more responsive to employers' skills needs. The LEP's Skills Advisory Panel will support the LSIP as its steering group, ensuring alignment to the wider economic strategy for the region. The LEP will contribute information, analysis and data on current and future economic priorities
- Skills and training have remained a core priority for the LEP this year with over 90% of the region's secondary schools, special schools, alternative providers and colleges now part of the Solent Careers Hub. Through our Careers Hub, the LEP also supports programmes to bridge the gap between education and the world of work, collaborating with schools & colleges and local employers through our Enterprise Advisor Network, Cornerstone Employer programme and Education Provider Steering Group. Gatsby Benchmark (measuring the quality of careers advice in schools and colleges) performance continues to improve across the Solent
- The LEP has supported several large careers events across the Solent connecting young people to local job, training and apprenticeships opportunities and building a valued talent pipeline for employers. The Hub extended careers support and guidance to those young people who are electively home educated and has also formed a collaboration of all Solent local authorities to support year 10 students who have been identified as being a high risk of becoming NEET once they leave secondary education
- Following a successful application led by Solent University and supported by the Solent LEP, the South Coast Institute of Technology (IoT) was officially launched in November 2022. A collaboration of five further education colleges and two universities, the IoT is central to ensuring a sufficient home-grown workforce with the right skills to meet industry needs. Working with key employers, it plans to welcome 1000 students when it opens in 2023
- In March, the LEP published a refresh of its Solent Skills Action Plan & Local Skills Report available [here](#) reflecting the Government's Levelling Up White Paper and providing a progress review on its plans and priorities to help the region reach its full economic potential

13. AN OUTSTANDING BUSINESS ENVIRONMENT

- In total, 240 people from Solent business have joined these programmes over the past 12 months, part of a total of 1,763 businesses who the Growth Hub team have supported with high or medium intervention
- A number of new Growth Hub programmes launched in 2022, with a focus on key sector support, Net Zero and Tech growth. In total, 240 people from Solent businesses have joined these programmes over the past 12 months, part of a total of 1,763 businesses which the Growth Hub team have supported with high or medium intervention
- The Solent LEP is leading on the launch of a Catalyst South Digital Skills Partnership. Catalyst South is a strategic alliance of six LEP areas including Coast to Capital, Enterprise M3, Hertfordshire, Thames Valley Berkshire and Southeast LEP. There is a focus on championing an economic and business voice, driving collaboration across boundaries, and tackling issues of common importance to stimulate growth and recovery



Centre for Creative and Immersive Extended Reality (CCIXR), University of Portsmouth

14. HEALTH AND WELLBEING AT THE HEART OF ECONOMIC SUCCESS



Kat Millmore-Davies, of the NHS Education Outreach Lead 350+ Programme, speaking at the Solent Summit

350+ NHS careers is an education outreach programme across Hampshire and the Isle of Wight aimed at students aged 5–18 years. The programme gives young people the opportunity to gain insight to the wealth of opportunities that a career in our NHS can offer. Starting in September 2022, the LEP's Careers Hub team have led 18 outreach event highlighting NHS 350+ across the Solent to students, with another 14 booked to take place in early

2023. The team adapted the programme to offer SEND establishments outreach activities to ensure all pupils have access to these fun, interactive and exciting workshops and assemblies. This also included virtual work experience, and delivering sessions alongside health care professionals who went into schools to talk to students such as porters, receptionists, chefs and gardeners.

15. SOLENT LEP BOARD, VALUES AND GOVERNANCE

OUR BOARD MEMBERS



7/7*

ANNE-MARIE MOUNTIFIELD

Chief Executive

Anne-Marie has been our Chief Executive since 2012. In 2020, she was named the Institute of Directors (IoD) London and South Chartered Director of the Year. She later became one of just three candidates nationally to be shortlisted for the IoD's overall Chartered Director of the Year Award.



7/7*

RACHAEL RANDALL

Interim Chair**

Rachael is the Principal and CEO of HTP Apprenticeship College Ltd which she established in 2000. Rachael is a LEP Board Director and has held a number of roles on the LEP Board, including Chair of the Skills Advisory Panel, Chair of the Search, Employment and Remuneration Committee, Equality and Diversity lead, and Deputy Chair



5/7*

GRAHAM BARNETSON

Business Director**



5/7*

GRAHAM GALBRAITH

Higher Education Director



5/7*

CLLR EDWARD HERON

Local Authority Director



4/5*

BROOKE HOSKINS

Business Director**



5/5*

CLLR JULIE JONES-EVANS

Local Authority Director



4/5*

CLLR SATVIR KAUR

Local Authority Director



5/7*

NICK LOADER

Business Director** and Interim Deputy Chair



5/5*

CLLR STEVE PITT

Local Authority Director



4/5*

CLLR ALEX RENNIE

Local Authority Director



4/6*

JO SAWFORD

Business Director**



4/5*

SALLI SHAPCOTT

Business Director**



6/7*

PAULA SWAIN

Business Director** and SME Champion



5/7*

DAVID YOUNGS

Business Director**

KEY

* Solent LEP Board Meetings attended throughout 2022

** Independent Non-Executive Directors, as outlined in the Corporate Governance Code 2018

16. SOLENT LEP GOVERNANCE

The role of the Board

The LEP Board keeps us focused on our objectives, ensuring that we deliver the right programmes and fund the right projects, and that our internal controls are effective. Our executive and non-executive directors provide strategic leadership, challenge and support, and contribute to the development of one of the most successful LEPs in the country. The Chair is responsible for the Board's overall effectiveness in directing the LEP. Under risk management, the Board carries out a robust assessment of emerging and principal risks and an update is reported and acted on at each Board meeting. In 2022 there were 5 Board meetings. The Solent LEP Chair is elected to the Board by businesses in the Solent area that have joined the LEP as business members.

SME representation

Currently the Solent LEP Board has two SME business representatives appointed from the business membership. They are Rachael Randall and David Youngs. While appointments are made at the discretion of our membership in line with our Articles of Association, the Board has agreed to establish by-laws in relation to Business Director appointments to ensure there is always at least one direct SME representative. In addition to direct representation, the Board has identified Board Director Paula Swain to represent and engage with the SME business community.

Oversight and accountability

We have extremely robust and transparent governance arrangements to ensure our investments deliver value for money and tangible economic outputs. That means monitoring new jobs, housing, employment space, improved skills and infrastructure, and increased levels of private sector investment.

Portsmouth City Council (PCC) is our accountable body, responsible for ensuring the proper use and administration of funding, all of which fall under the annual audit of the local authority's accounts. PCC also ensures that decisions are made in accordance with the National Local Growth Assurance Framework.

The formal annual accounts for each financial year are typically signed off by the Board each autumn. We have agreed timescales and operating practices to support the effective implementation of decisions, which are described in the protocol and service support agreement between us and PCC.

Equality and Diversity

We listen, engage and champion our local people, from all parts of our area and without bias.

The Solent LEP is committed to having a Board which embraces diversity and promotes equality of opportunity within the Solent economy. In particular, the Solent LEP is committed to improving the gender balance and representation of those with protected characteristics on its board. The LEP has achieved its aim of securing equal gender representation by 2023 ensuring the Local Enterprise Partnership board is representative of the businesses and communities they serve. The Solent LEP's Board is currently made up of 16 members, with the percentage of women on the Board currently at 50%.

Our Diversity champion, Jo Sawford, says: "The LEP itself was founded in the belief that our local community and area is Together Stronger."

In accordance with the processes and procedures of our accountable body, Portsmouth City Council, the LEP have adopted the Integrated Impact Assessment (formerly Equality Impact Assessment (EIA)) Toolkit. In addition to this, the LEP's own Equality and Diversity Policy is [here](#).

Our values

In order to ensure continued best practice, Solent LEP Directors are provided with independent non-executive development on a regular basis. All Board Members and LEP Officers must undertake a full induction and training within the first quarter that they are in post. The Board have also established new corporate values which shape the LEP's activity. These are:

- We support businesses to grow, individuals to succeed and communities to flourish
- We are open, transparent and honest and work without bias, ensuring that an evidence-based approach drives our decision making
- We lead by example and value leadership which is ambitious, fair and objective
- We embrace diversity as an essential component in the way we work
- We nurture the talent, innovation and creativity of those we work with
- We believe trust and mutual respect are essential for teamwork and collaboration

Monitoring our values

Our Board continually assesses and monitors our culture, policies, practices and behaviour to ensure they are aligned with our purpose, values and strategy.

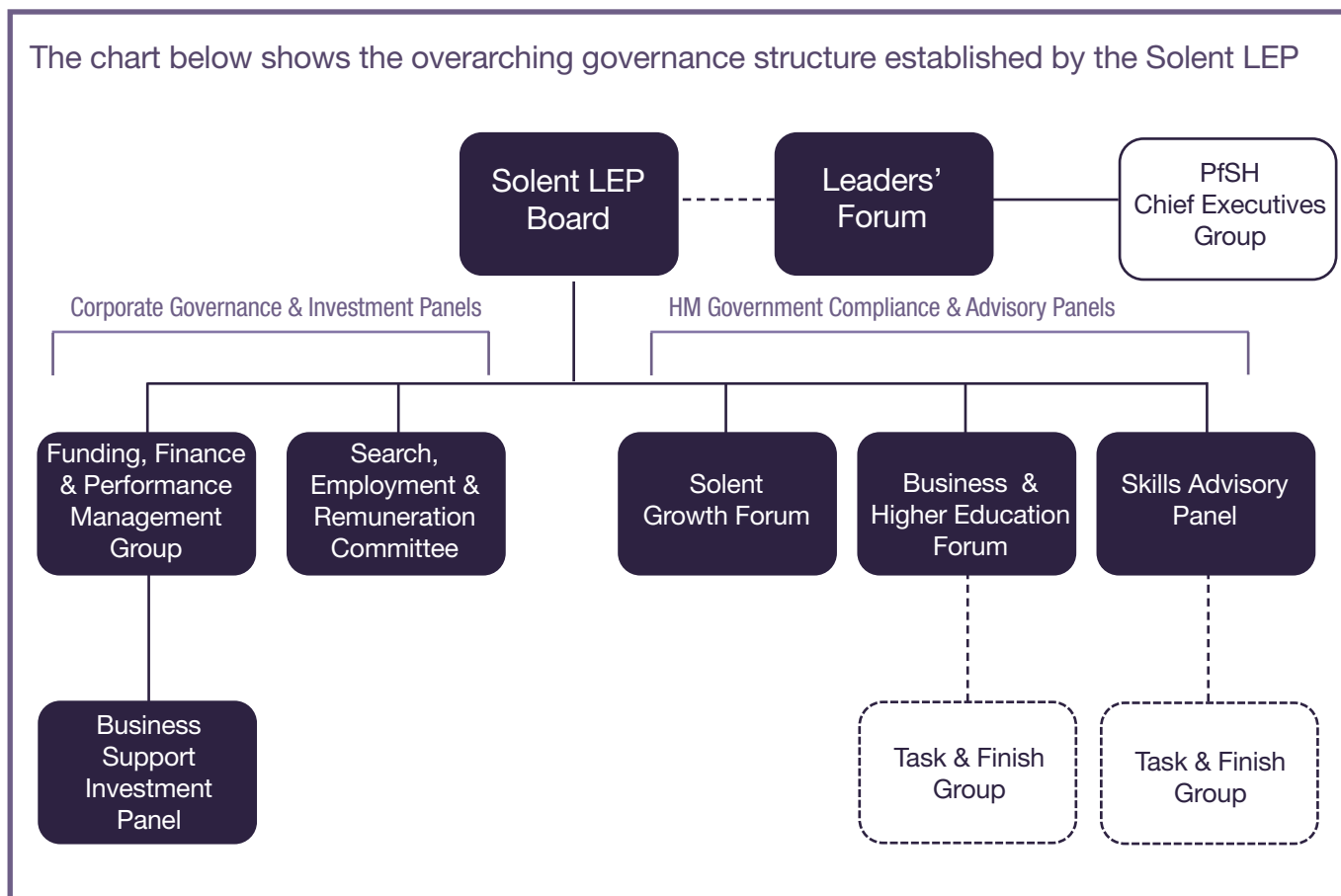
In support of this, we operate a number of decision-making and advisory panels, which make sure that we spend funding in the areas that need them most. These panels bring business leaders together to take forward priority

areas of work. We work hard to promote a culture of openness, fairness and debate. The LEP and PCC have agreed a risk management framework for funded schemes, to inform monitoring in line with central government standards. This framework is available in section 5 of the Solent LEP's 'Advice to Scheme Promoters on the Development of Business Cases' and is monitored at each Board Meeting.



GOVERNANCE STRUCTURE

The chart below shows the overarching governance structure established by the Solent LEP



Workplace

Our Search, Employment and Remuneration Committee plays a vital role in supporting our executive team by ensuring formal and transparent procedures are in place for developing employment policy. It is in charge of all in-house employment issues, including organisational structure, appointments, performance targets, pay, honoraria, service contracts and succession. Information about salaries is published on our website. The committee makes recommendations to the Board in relation to the recruitment process for Board members and ensures there are robust succession planning processes in place.

Championing and Scrutinising the Solent LEP

The Solent LEP has invested in a wide range of projects in our economy, supporting businesses, creating and maintaining jobs, and attracting additional private sector investment. To champion and scrutinise our work under the Solent Growth Deal and other Government funded programmes, we have established an external panel, the Solent Growth Forum, which offers expert advice, recommendations and guidance, ensuring Government can be confident that there are strong underpinning local authority partnership arrangements in place to facilitate joint

decision-making and collaboration on growth and economic development. The Solent Growth Forum ensures that the operation of Solent LEP continues to be subject to external scrutiny and expert oversight. Associate membership of the forum is available to all neighbouring local authorities recognising the contribution that these areas make to the Solent economy.

Investment guidance

Our Business Support Investment Panel provides expert advice and guidance to inform our approach to SME funding support, and makes decisions relating to our range of small business investment programmes. The panel met three times in 2022.

Finance focus

Our Funding, Finance and Performance Management Group reports and provides advice to our full Board of directors. Appointed by the Board, the group focus on the detail behind the finances and helps to interrogate our approach to performance management, including oversight of our annual internal audit plan. The group met five times in 2022.

Skills advice

Our Skills Advisory Panel pools the leadership and knowledge of employers and education providers to help shape our approach to skills and response to labour market needs. Members work together to understand and address local challenges, both immediate and longer term, across our key industries. The panel met three times in 2022.

Maritime UK Solent

Building on our partnership with Maritime UK at a national level, the Solent LEP incorporated Maritime UK Solent Limited as a wholly owned subsidiary of Solent Local Enterprise Partnership Limited. It forms part of a network of regional maritime clusters that foster collaboration among business, academia and local government in the UK's maritime regions and provide leadership to ensure the continued growth and prosperity of Solent's maritime sector.

The Solent LEP have worked with Maritime UK to establish a dedicated arrangement in relation to Marine and Maritime

to reflect the role of Solent as a key regional cluster as set out in HM Government's **Maritime 2050** strategy and in accordance with the Solent LEP's prominent role in Maritime UK at a national level.

Maritime UK Solent published its first Business Plan, articulating its vision to provide leadership for a thriving maritime sector in the Solent through activities that support growth, collaboration, and that showcase the Solent's maritime strengths and innovation on a national and international stage. Read it [here](#)

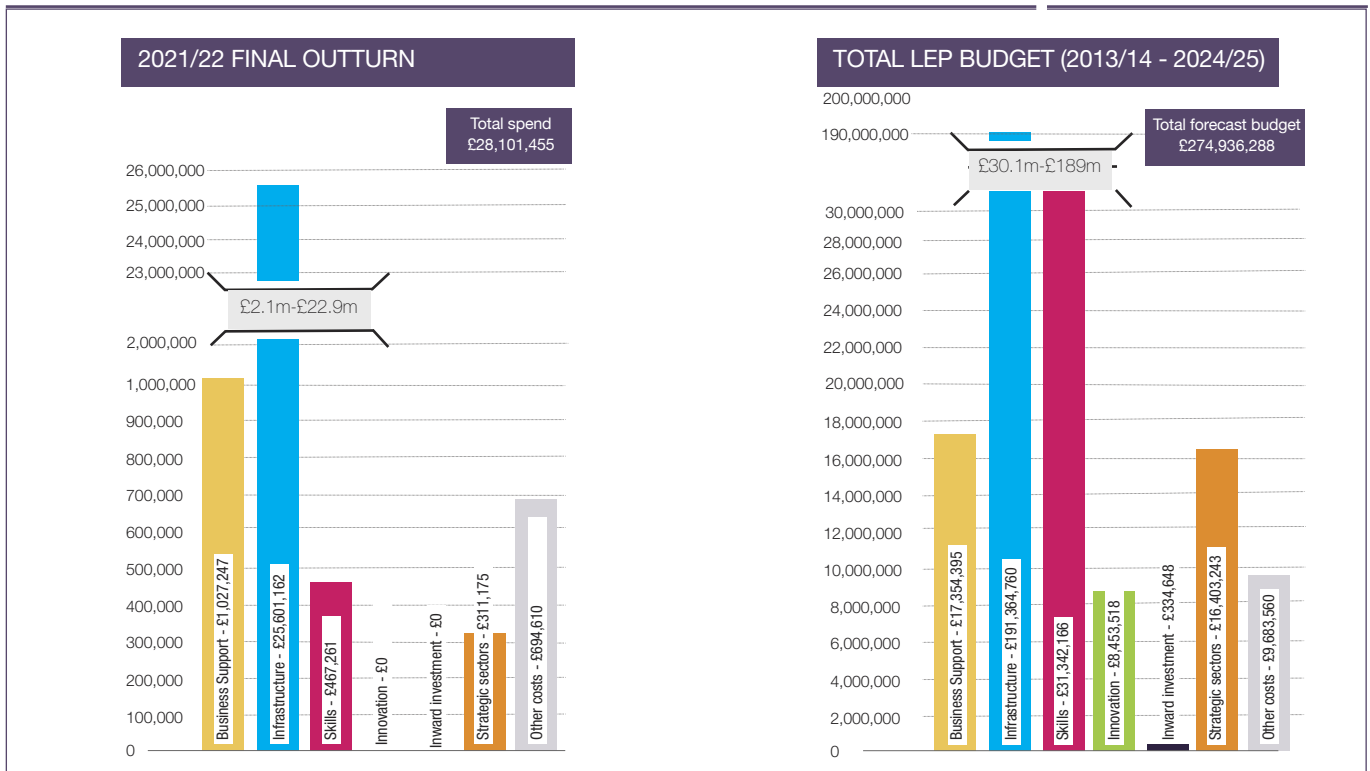
Anne-Marie Mountfield is the Chair of Maritime UK Solent and the LEP's Board Representative on the National Maritime UK Council, and Graham Barnetson is the Nominated Vice Chair of Maritime UK Solent Board, the observer on the Maritime UK council and maritime lead from the Solent LEP Board, thereby cementing the link with the Solent LEP and Solent 2050 strategy.

The Chair, Vice Chair and Executive Director collectively retain a majority of votes at Board level.



1. Further information on Maritime UK can be found [here](#)

17. Financial Forecasts to 2024/25



Sources of funding

Source of Funding – £	2021/22 Actual Expenditure	2013/14 - 2020/21 Actual Expenditure	Total LEP Budget (2013/14 - 2024/25)
Other Government Funding Programmes	£889,637	£30,661,822	£32,292,748
Solent Growth Deal	£19,306,027	£144,922,106	£181,007,261
Solent Growing Places Fund	£217,551	£14,643,792	£31,228,891
Central Government Funding	£835,979	£5,675,658	£7,514,469
Other	£258,894	£1,721,175	£3,940,468
Local Government Funding	£0	£343,900	£343,900
Getting Building Fund	£6,582,113	£7,368,044	£17,955,000
European Funding	£11,253	£642,303	£653,556
Outturn and Forecast Totals	£28,101,455	£205,978,799	£274,936,288

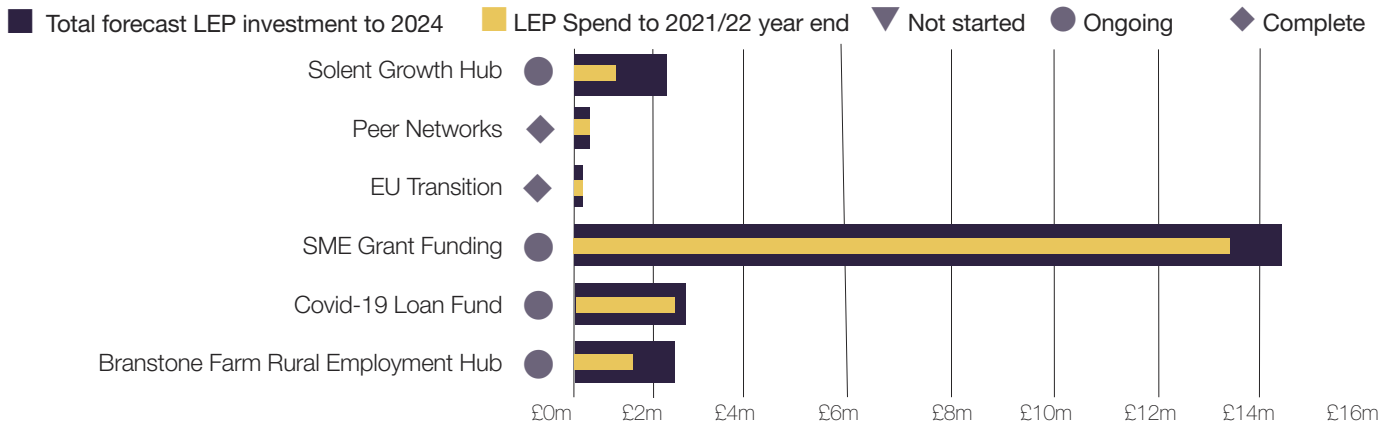
Financial Summary	2021/22	2013/14 - 2024/25
Original Budgeted Expenditure:	£28,101,455	£274,936,288
Total committed to external organisations through grants and loans	£25,551,525	£252,569,751
Total committed to suppliers to purchase goods, works or services	£1,165,244	£9,551,655
Total running costs	£1,384,686	£12,814,883

Figures from: 2021/22 Final Outturn – Solent LEP Finance Report, Appendix B, May 2022 Meeting
 2022/23 Projected Outturn – Solent LEP Finance Report, Appendix A December 2022 Meeting

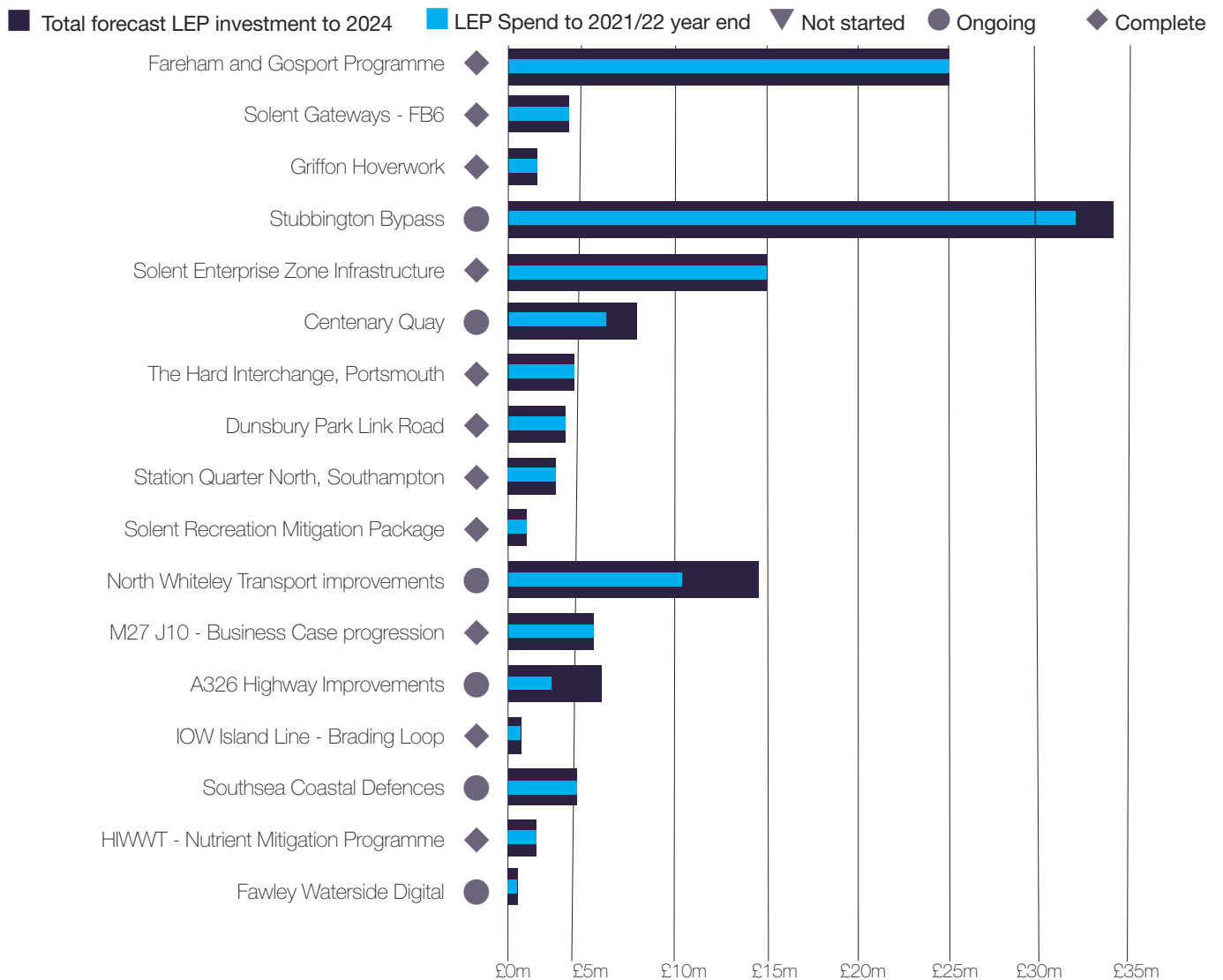
Full financial forecasts are available at solentlep.org.uk

18. SOLENT LEP - PROJECT DASHBOARD

BUSINESS SUPPORT



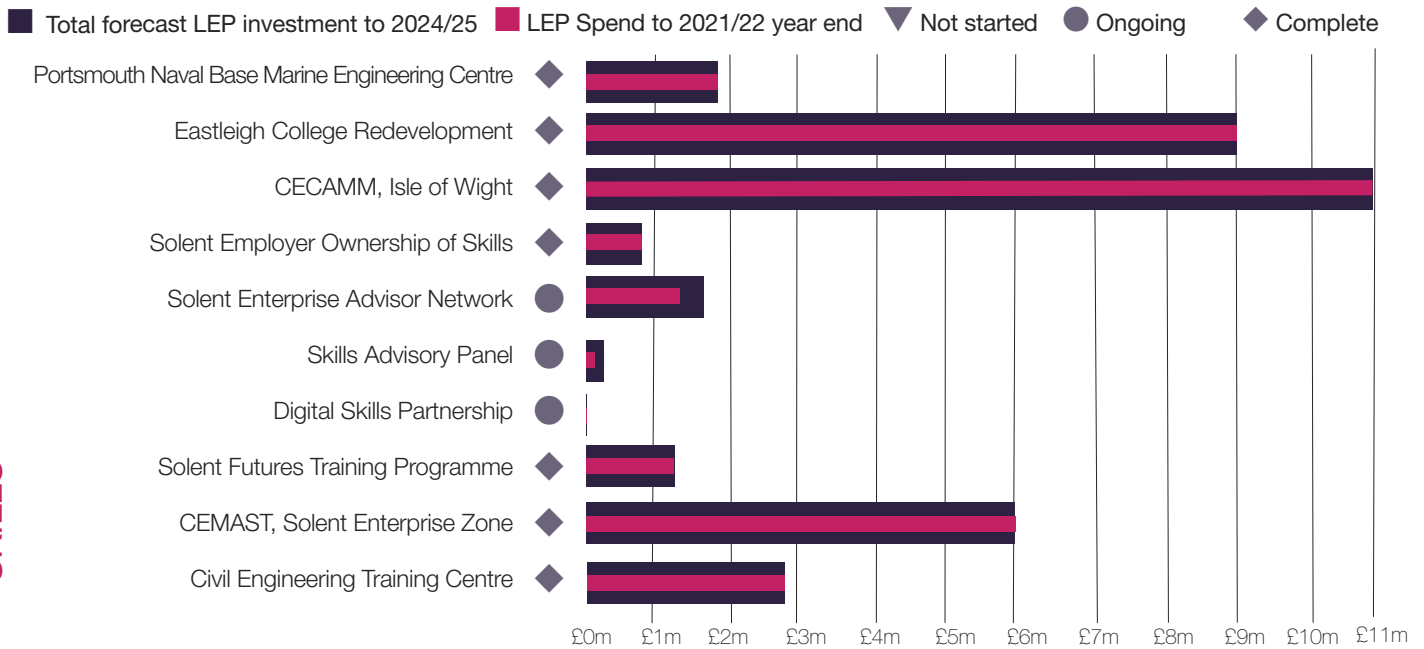
INFRASTRUCTURE



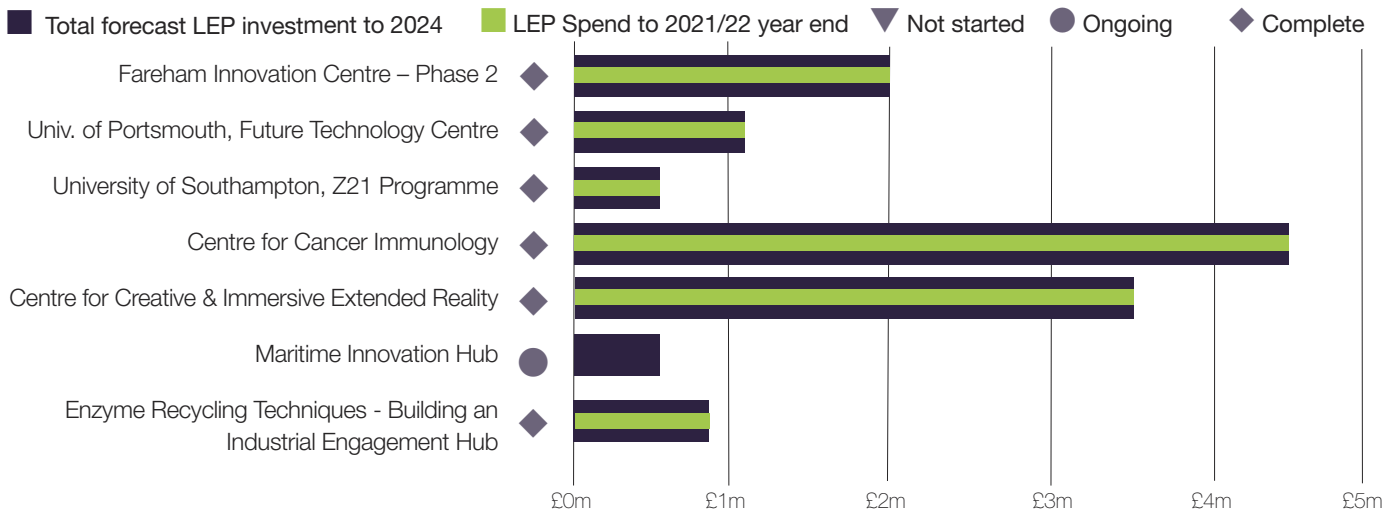
Data taken from Solent LEP Board Report, Appendix B, December 2022

SOLENT LEP - PROJECT DASHBOARD

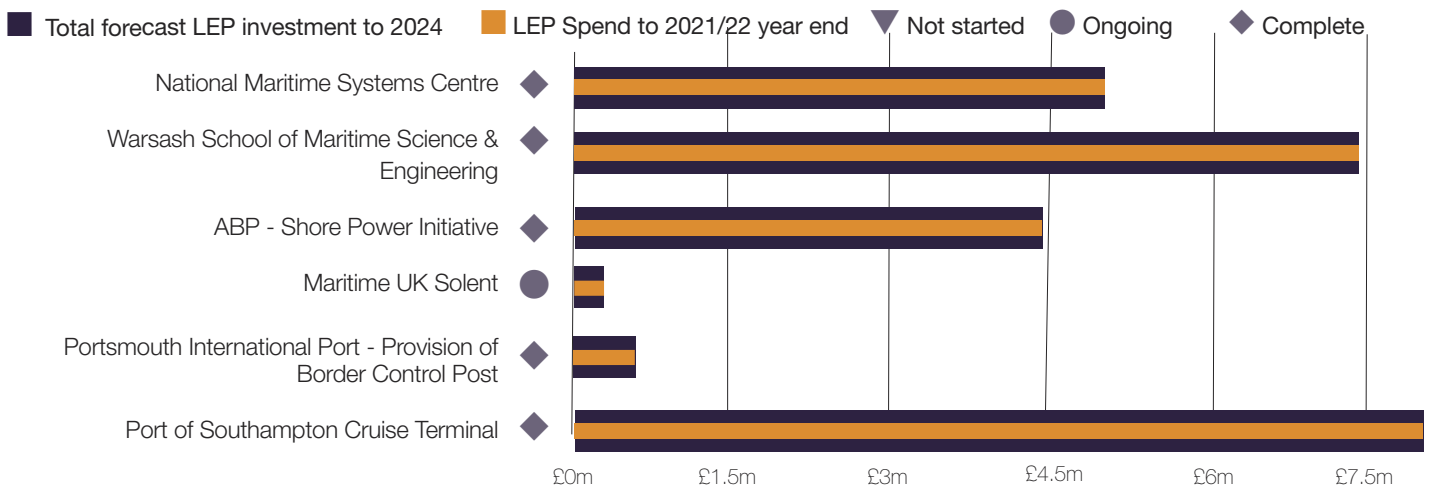
SKILLS



INNOVATION



STRATEGIC SECTORS



Data taken from Solent LEP Board Report, Appendix B, December 2022



SOLENT
LOCAL
ENTERPRISE
PARTNERSHIP
[#solent2050](#)

t: [023 9268 8924](tel:02392688924)

e: info@solentlep.org.uk

w: solentlep.org.uk



YouTube

